



Details :

- a. Thickness of wall using burnt bricks = 230 mm
- b. Burnt brick size : 230 x 105 x 75 [L x B x H]
- c. Thickness of plaster on either faces = 15 mm
- d. Density of brick masonry = 20 kN/m<sup>3</sup>
- e. Roof and floor slabs are solid reinforced concrete
- f. Door size 1.0 × 2.1 m

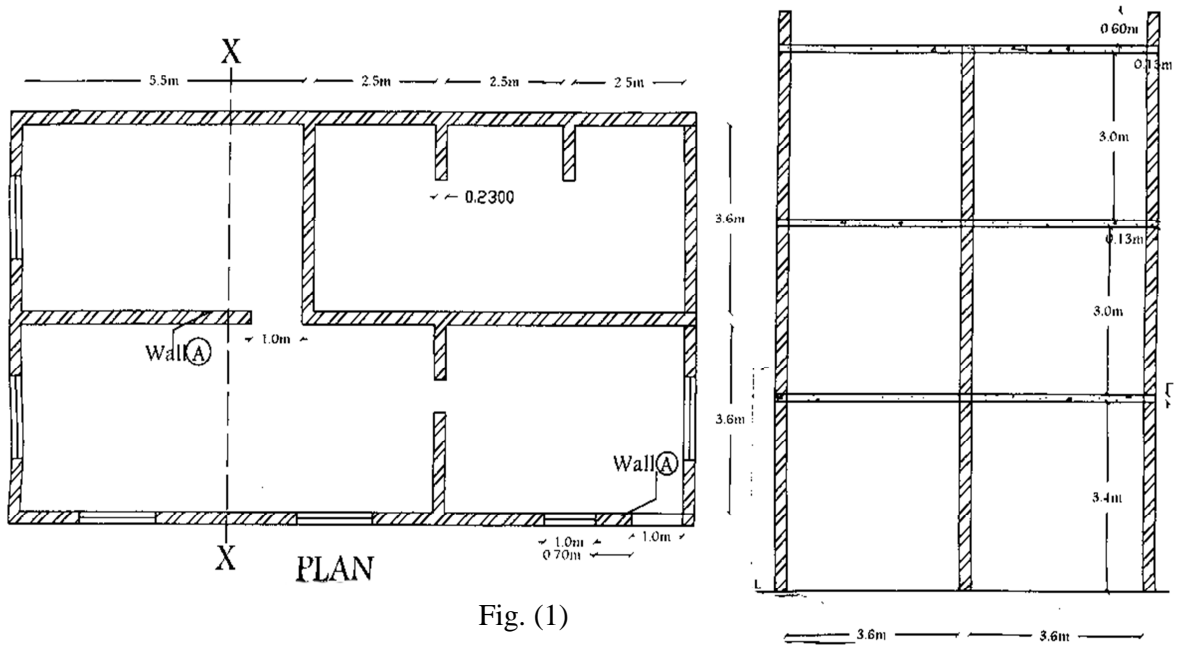
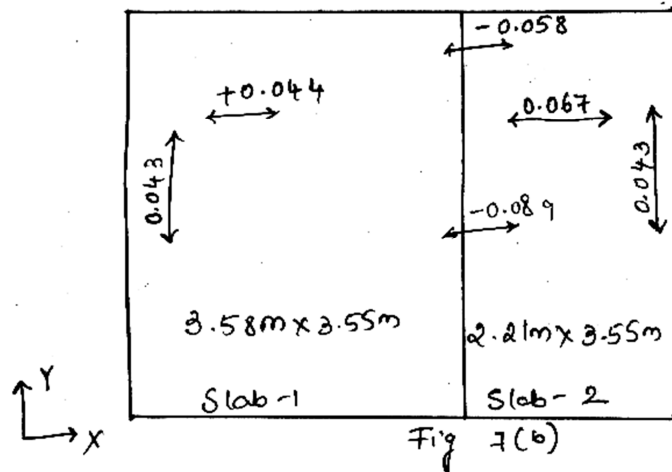


Fig. (1)

- 7 a. List out the cost reduction technique through construction process efficiency. Explain any two. 6
- b. Fig. 7 (b) shows the moments, if a slab with width ratio of spaces < 2. Design it for area of steel and also check for serviceability. Draw the reinforcement layout.



14

- 8 a. Explain with sketches, the typical construction of roof assembly. 5
- b. Explain in detail with sketches of casting process and beams for curved shape (jack arch) panels. 15